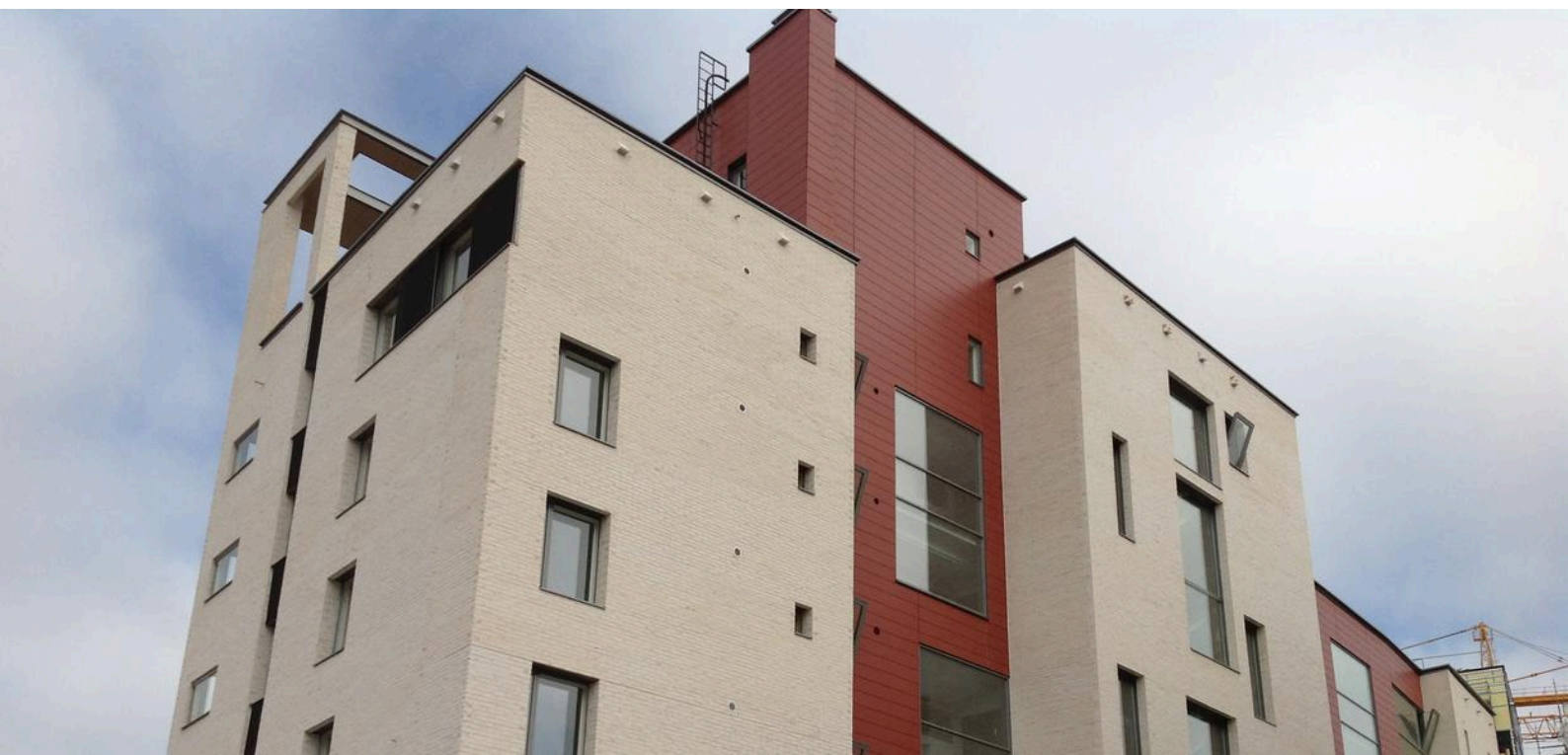




As Oy Helsingin
Riontähti
Rescue Plan



As Oy Helsingin Riontähti rescue plan

Completed Jun 6, 2013

Author Joachim Miinalainen

Last updated Jun 18, 2021

Updater Joachim Miinalainen

This rescue plan was made using the Pelsu Rescue Plan service.

This rescue plan has 32 pages.

Contents

1	Introduction	5
2	Basic property information	7
2.1	Basic information	7
2.2	Organisation	7
2.3	Other information	7
3	Vastuunjako	9
4	Important phone numbers	10
4.1	Important numbers of the property	10
4.2	Other important numbers	10
5	Vaaratilanteet ja niiden vaikutukset	11
6	Safety procedures	12
6.1	Extinguishing equipment	12
6.2	Safety equipment	12
6.3	Fire safety	14
7	Other arrangements	17
7.1	Lift	17
7.2	Ventilation device	17
7.3	Waste disposal	17
8	Action guidelines	18
8.1	Alerting help	18
8.2	Sudden illness or accident	19
8.3	Fire	19
8.4	Tulipalo - toimintaohjeet, kun turvallinen poistuminen on estynyt	20
8.5	Action in a fire alarm situation	21
8.6	Action in the gathering area	22
8.7	Assisting people with reduced mobility in emergency situations	23
8.8	Water damage	23
8.9	Under threat of violence	23
8.10	Public warning signal	24
8.11	Gas hazard	25
8.12	Radiation hazard	25
8.13	Blackouts	26
9	Civil defence	27
10	Säilyttäminen	28
11	Attachments	28

Appendix A Business space owner's responsibilities	29
Appendix B How to use a small fire extinguisher	30
B.1 Extinguishers	30
B.2 Extinguishing blankets	30
Appendix C Car shelter	31
Appendix D Home storage supplies	32

1 Introduction

The drafting, upkeep and communication of the rescue plan are based on the requirement of the Rescue Act (379/2011). In this rescue plan, there is an account:

1. for the conclusions of the assessment of hazards and risks;
2. for the safety arrangements of the building and the premises used in the operations;
3. regarding the instructions to be given to people for the prevention of accidents and acting in accident and danger situations;
4. other possible actions for independent preparation at the location. (Rescue Act 379/2011, Section 15))

The rescue plan must be kept up to date and it must be communicated in the necessary way to the persons in the relevant building or other site. (Government Decree on Rescue Action 407/2011, Section 2.)

There are also other requirements for safety in the Rescue Act; the most important of these are: The owner and holder of the building and the operator must, for their part take care that the building, structure and its surroundings are kept in such condition that:

1. the risk of the starting, intentional starting and spreading of a fire is slight;
2. the people in the building can vacate the building in the event of fire or other sudden danger situation or they can be rescued in another way;
3. rescue operations are possible in the event of fire or another accident;
4. the safety of rescue personnel has been taken into account. (Rescue Act 379/2011, Section 9))

The following equipment and devices must be kept in working order and serviced and inspected appropriately:

1. extinguishing, rescue and prevention equipment;
2. devices that facilitate extinguishing and rescue work;
3. fire detection, alarm and other devices signalling the risk of an accident;
4. the lighting and signs of the exit routes;
5. the equipment and devices of the civil defence shelters (Rescue Act 379/2011, Section 12))

The owner and holder of the building and the operator must, for their part:

1. the starting of fires is to be prevented, as well as the arising of other hazardous situations;
2. the protection of persons, property and the surroundings in danger situations is to be prepared for;
3. the extinguishing of fires, and other such rescue measures that they are able to do independently, are to be prepared for;
4. start action for securing safe exit from fires and other danger situations, as well as action for

making rescue operations easier. (Rescue Act 379/2011, Section 14))

2 Basic property information

2.1 Basic information

Property name	As Oy Helsingin Riontähti
Building address	Rionkatu 11 00220 HELSINKI
Number of apartments	42
Number of business premises	1
Building type	Apartment building
Number of floors	7
Property owner	SATO Oyj tel. 020334443 http://www.sato.fi

2.2 Organisation

Service manager	Riikka Korhonen SATO riikka.korhonen@sato.fi
Customer service	Asiakaspalvelu SATO phone 020 334443 asiakaspalvelu@sato.fi
Talomestari	Hannes Michael SATO hannes.michael@sato.fi

2.3 Other information

The site falls within the area of the following rescue service: Helsinki.

Heating type	District heating
Main water shutoff	In the parking garage, technical areas, in the heat distribution room
Heat distribution room	In the garage
Electricity switchboard	In the parking garage, technical areas, access from the heat distribution room
Ventilation device	On the roof
Air ventilation emergency stop	In conjunction with the entrance on the ground floor
Location of the fire alarm	In the garage
Maintenance	Tapiolan Lämpö Oy phone 0207505360 service 0207505360
Insurance company	If tel. 010191919 http://www.if.fi
Gathering area	In the inner courtyard
Back-up gathering area	Taking shelter, when necessary, in the interior areas of the neighbouring buildings

The premises of the property

Business premises

Location	Name
Street level, the Rionkatu end	Nimetön

3 Vastuunjako

Osapuoli	Vastuualue
Isännöinti	Vastaa koko kiinteistön isännöinnistä, huoltosopimusten ja vastaavien asioiden hallinnoinnin hoitaminen, ilmoitettuihin turvallisuus- tai muihin puutteisiin puuttuminen tai sen vastuuttaminen muulle taholle. Isännöitsijä on viranomaisvalvonnan ja muiden vastaavien asioiden yhteyshenkilö ja osallistuu mm. palotarkastuskierroksiin
Kiinteistöhuolto	Kiinteistön tekniset järjestelmät ja turvalaitteet, piha-alueen hoito, tarvittavat lumenpudotukset yms. asiat. Huoltomies havannoi kohteella liikkeessaan puutteita ja hoitaa niitä omatoimisesti kuntoon tai ilmoittaa asiasta isännöintiin.
Asukas	Asukas vastaa omasta asuinhuoneistostaan ja varastokopistaan sekä omasta irtaimistostaan ja toiminnastaan yhtiössä. Asukkaiden tiloissa olevat, kiinteistön järjestelmät tai kiinteät rakenteet, hoitaa huoltoyhtiö
Normaali tiedonkulku puutteiden osalta: Asukas--- Huoltoyhtiö --- Isännöinti	

Asukkaat voivat ilmoittaa turvallisuushuomioista tai muista puutteista huoltoon tai isännöintiin puhelimitse tai sähköpostilla, tarvittavat yhteystiedot löytyvät esimerkiksi tämän suunnitelman "Organisaatio"-luvusta.

4 Important phone numbers

4.1 Important numbers of the property

Task	Name	Telephone number	Service phone number
Maintenance company	Tapiolan Lämpö Oy	0207505360	0207505360
Lift maintenance	KONE Hissit Oy (2)		0800 15063

4.2 Other important numbers

Operator	Telephone number	Duty hours
Public emergency numbers	112	24 h
Poison information centre	0800 147 111	24 h

5 Vaaratilanteet ja niiden vaikutukset

Vaaralla tarkoitetaan tekijää tai olosuhdetta, joka voi aiheuttaa haittaa tai saada aikaan haitallisen tapahtuman.

Riski on uhkaan liittyvä vahingon todennäköisyyden ja vakavuuden yhteisvaikutus.

Riski ja todennäköisyys	Syitä riskin toteutumiseen	Seuraus
Tulipalo (mahdollinen)	Avotuli, kynttilät, tupakointi, sähkölaitteet, sähkökeskukset ja -asennukset, ajoneuvot, tulityöt, ruoan valmistus, tuhopoltto	Henkilö- ja omaisuusvahingot
Vahingonteot, ilkivalta, varkaus (epätodennäköinen)	Puutteellinen valaistus, auki jäänyt ulko-ovi tai yleisten tilojen ovi, avataan ovi tuntemattomalle henkilölle	Omaisuusvahingot
Tapaturma (mahdollinen)	Talvisin liukkaus, lumen tai jään putoaminen katolta, kaatuminen	Henkilövahingot
Vesivahinko (mahdollinen)	Puutteet huollossa/ valvonnassa, jäätyminen, tukokset, laitteiden vikaantuminen, myrsky	Omaisuusvahingot
Kaasuvaara (epätodennäköinen)	Lähialueen vaarallisten aineiden kuljetukset, tulipalo lähialueella	Sisälle suojaautuminen
Sähkökatkos (mahdollinen)	Salama, myrsky, laiteviat	Laitteiden rikkoutuminen
Liikenneonnettomuus (mahdollinen)	Lähialueen liikenne, liikenne piha-alueella	Henkilövahingot
Säteilyvaara (epätodennäköinen)	Säteilyonnettomuus	Suojaautuminen sisätiloihin

6 Safety procedures

6.1 Extinguishing equipment

Location	Extinguishing equipment
Three units in the parking garage	Fire extinguisher

Hand-held fire extinguishers should be inspected:

- at least yearly when the extinguisher is subjected to factors affecting its operational ability, such as moisture, vibration or fluctuations in temperature (outdoor areas)
- at least once every two years (indoor areas)

6.2 Safety equipment

Smoke extraction

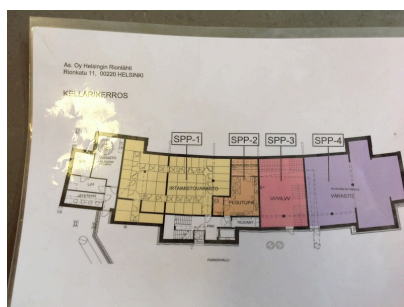
The purpose of smoke ventilation is to remove fire gases, smoke and heat from the premises. The smoke ventilation equipment must be maintained and tested regularly according to the user maintenance instructions. The smoke ventilation equipment may only be used by the rescue services.

Smoke removal machine

Location of smoke extraction hatches	Smoke extraction windows in the wings, floor by floor. In the staircase on the top floor. Smoke extraction fans in the basement.
Location of centre	On the ground floor, against the wall next to the entrance
Smoke removal activation	The ground floor, in conjunction with the entrance



Smoke extraction



The execution of the smoke extraction of the basement floor

Exit guide, security or signal light

Emergency exit signs show how to exit the building. Any faulty or incomplete signs must be reported to property maintenance services.

Exit guide, security or signal light

Location	Ground floor, basement, parking garage, business premises
Location of centre	Electricity switchboard
Coverage	The exit routes of the ground floor and the basement

Ventilation emergency stop

If the building is subjected to an external danger, such as fire gases from an adjacent building, the ventilation must be shut off. In such a case, the rescue authorities usually issue an emergency warning, providing additional instructions, such as to turn off ventilation systems.

Air ventilation can be stopped by anyone.

Ventilation emergency stop: In conjunction with the entrance on the ground floor

6.3 Fire safety

Fire alarm

The purpose of the automatic fire alarm system is to warn people in the property about an imminent fire. The system detects fires quickly as sensors react to the fire and the alarm bells start ringing. The system will alert the emergency response centre automatically.

Fire alarm

Location	In the garage
Location of centre	In the garage
Coverage	Of the parking garage



Fire alarm centre

Securing the functionality of the notification transfer connection

- Periodic maintenance and malfunction repairs
- Monthly testing of the notification transfer connection
- Periodic inspections

Actions in the event of malfunction of the notification transfer connection

In the event that a malfunction is detected in the notification transfer connection, an enhanced surveillance is performed on the premises with the help of personnel.

- Connection to the emergency centre
- An on-call person to supervise the fire alarm centre
- An on-call person makes the emergency notification if needed and guides the rescue department to the site of fire

Smoke detector

The purpose of fire alarms is to alert of any imminent fire. This will enable measures to extinguish the fire, warn others and take rescue measures.

Smoke detector

Location	Fire alarms in the apartments connected to the mains
Coverage	All the apartments
System model	Mains
Type of alarm	Localised alarm

Rescue route

The rescue way is a drive way, which the rescue department's vehicles can use in emergency situations to reach to within close proximity of the building.

- It is not permitted to park cars, pile up snow, set up lampposts, plant vegetation, or do, leave, or set up anything else that might block traffic on the rescue way.
- Escape routes must be indicated with a text sign in accordance with Ministry of the Interior decree no. 468 of 2003.
- A rescue way sign is not used if the rescue way is not marked in the building's construction permits.
- Please contact rescue authorities for advice on any escape route questions.

Rescue route

Location	The driveways of the front and back sides of the building. Collection points on the driveway of the building on the side of the park. Picture attached.
----------	--

Emergency exit routes

The principle of exit safety is that all spaces of the building must have at least two exit routes at all times, which do not require keys or other tools to open the doors. Exiting must also be possible to do in the dark, which is why the exit routes must be clear at all times. Because the property has 7 floors, the window or apartment- specific balcony shall serve as an emergency exit. In this event, the rescue department shall assist in evacuating the building in case of emergency. Objects are not to be stored in front of the exits. (Environment Ministry's regulation of fire safety of buildings.)

Exit ways and doors leading to them must be easily accessible and openable in emergency situations from the inside.

A door can be locked, for example, to prevent trespassing from the outside, but must it must be possible to open it from the inside without a key during the normal use of the building.

Never exit into a smoky stairway.

7 Other arrangements

7.1 Lift

Lift

Location	In the stairway
Maintenance company	KONE Hissit Oy (2)

7.2 Ventilation device

Ventilation device

Location	On the roof
Description	Ilmanvaihtokoneen tyyppi: Ilmastointikone
Emergency stop switch location	In conjunction with the entrance on the ground floor

7.3 Waste disposal

Waste disposal

Location	Refuse room at the end of the building on the side of Rionkatu.
----------	---

8 Action guidelines

The following pages contain a guide on accident prevention and on how to act in accident and danger situations. **Read the action guide carefully!**

The correct actions, solutions, and choices prevent and limit accidents. This way accidents can be minimised or they can be prevented altogether.

Safety and security are our shared concern!

8.1 Alerting help

In all urgent emergency situations, whether it be a police, fire department, paramedic, or a social worker case involving an urgent need for help **CALL THE EMERGENCY NUMBER: 112**

Call the emergency number yourself if you can

It is important to make the emergency call yourself, if the matter concerns you. The victim has more knowledge on the situation, based on which the dispatcher can send help accordingly. Using middle-men to make the call can delay getting the right kind of help on site.

Tell what happened

The emergency centre dispatcher will ask the caller about what happened so that they can send the appropriate assistance.

Give the exact address and municipality

The emergency centre might have several same addresses in different municipalities/cities in its service area. Therefore it is also important to know the name of the town/city/municipality where the accident has taken place.

Answer the questions that are asked of you

The questions asked by the dispatcher are important. They do not delay alarming for help. In urgent cases the dispatcher already alerts the authorities and other partners during the call, and gives them more information on what has happened.

Act according to the information given to you

The dispatcher is trained to give instructions in various types of situations. It is important to follow the given instructions. Correct initial actions often play an important role in the end result.

End the call only after you're given permission to do so.

Ending the call too soon may delay the help from arriving. After you are given the permission to end the call, end it. Keep the phone line open. The dispatcher or the help on its way may need additional information on what has happened.

8.2 Sudden illness or accident

Find out what happened

- Has the person fallen or fainted?
- Are there possibly eye witnesses, that can tell you better about what has happened?

Check the person's condition

- Can you wake the person up by talking or shaking?

Check breathing

- If the person doesn't wake up, check breathing: place the back of your hand in front of the patient's mouth and feel if there is air flow.

Make an emergency call.

- Call the number **112**.
- Tell where you are calling from.
- Tell what happened
- Act according to directions.

Give first aid if needed.

- If the person is not breathing, start with first aid.

Turn an unconscious but breathing patient into the recovery position on their side.

Observe the patient.

- If there are changes in the patient's condition before the rescue department arrives, notify them by calling the emergency number **112**, so that the emergency centre can re-evaluate your situation.

Guide the professional help quickly to the patient

- Tell the professional help what has happened and what has been done.

8.3 Fire

Save

- Make an assessment of the situation. Rescue those in immediate danger.
- Be careful not to breathe smoke! Smoke is highly toxic and you can lose consciousness quickly if you breathe it.

Warn

- Warn others in the building about the fire and the threatening danger.
- Direct people to the gathering area.

Alert

- Call the emergency number **112** from a safe location.
- Tell who you are, where the fire is (address and floor), what is on fire, and if there are people

in danger.

- Do not hang up the phone until you are given permission to do so.

Extinguish

- Perform initial extinguishing measures, where possible.
- A grease fire is extinguished by suffocating it with a fire blanket.
- When an electrical appliance is on fire, disconnect power and begin extinguishing the fire.

Limit

- Remove fire sensitive items and flammable liquids.
- Contain the spread of fire and smoke by closing windows and the door as you exit.

Guide

- Direct the rescue personnel to the location or arrange guidance. For example: one person stays to guide on the side of the parking lot and another next to the building.

Using the lift in the event of a fire is strictly forbidden!

In evacuation situations the gathering area is: In the inner courtyard

Back-up gathering area: Taking shelter, when necessary, in the interior areas of the neighbouring buildings

8.4 Tulipalo - toimintaohjeet, kun turvallinen poistuminen on estynyt

Joskus toisaalla riehuva tulipalo estää turvallisen poistumisen kiinteistöstä. Näissä tapauksissa on viisainta pysytellä savuttomassa tilassa ovet ja muut aukot suljettuina.

Jää asuntoon ja ole rauhallinen.

- Älä poistu porraskäytävään.
- Kerrostaloissa jokainen asunto on tehty omaksi palo-osastokseen, josta palon leviäminen toiseen asuntoon on estetty rakenteellisin toimenpitein.
- Hyppääminen korkealta johtaa kohtalokkaisiin seurauksiin, asuntoon jääminen ei.
- Mene parvekkeelle tai ikkunan luo ja herätä huomiota
 - Soita numeroon 112 ja kerro tarkka osoitteesi

Varaudu tulipalon leviämiseen.

- Laske varmuuden vuoksi vettä esimerkiksi lavuaariin.
- Jos asuntoon alkaa tulla savua ovien raoista, postiluukusta tai ilmanvaihtoventtiileistä, tuuleta raikkaalla ilmalla ja tiivistä vuotokohdat kosteilla tekstiileillä.
- Jos asunnon ovi alkaa kuumeta, jähähdytä sitä vedellä.
- Jos liekit lyövät asunnon ikkunoihin, siirrä helposti syttyvät tavarat pois ikkunoiden läheisyydestä.

Nouda viranomaisten antamia ohjeita.

8.5 Action in a fire alarm situation

The building has an automatic fire alarm system, which sends an alert to the rescue department. Everyone must vacate the building immediately when they hear the fire alarm.

- Bring outdoor clothes with you if they are nearby.
- Close doors and windows
- Use the nearest escape route to exit the building.
- Direct customers and guests.
- Call the number **112** from a safe location and provide further information about the situation. At the same time, you will make sure that the emergency center has been notified about the fire.
- Move to the gathering area; do not stay in front of the entrances.
- No-one may leave the gathering area without permission.

Gathering area: In the inner courtyard

The danger is only over when the rescue department gives permission to return to the building. The safety personnel of the property passes on the announcement concerning moving back inside to the personnel.

8.6 Action in the gathering area

Gathering area: In the inner courtyard

When people have left the building and proceeded to the gathering area, one person must be appointed to take responsibility for the activities at the gathering area. Based on the situation at hand, it is necessary to consider whether it is safe to remain in the designated gathering area or if people should be directed elsewhere, for example into a pre-arranged interior area or to a property in the vicinity (the back-up gathering area).

Do not leave the gathering area without the permission of the rescue authorities.

Factors to bear in mind in the gathering area:

- taking care of any possible injured parties
- looking after people with reduced mobility or otherwise poor physical condition
- if one is aware of someone having remained inside, this is to be reported

Back-up gathering area

Back-up gathering area: Taking shelter, when necessary, in the interior areas of the neighbouring buildings

In severe winter conditions or other situations, an additional gathering area may be needed. Authorities will also provide instructions about shelter locations for long-term shelter.

8.7 Assisting people with reduced mobility in emergency situations

In an emergency situation, the movement of people with reduced mobility out of the building may be difficult and slow. If you know there is a neighbour with reduced mobility, for example handicapped, blind, or elderly, try to secure their safe exit in emergency situations. If you know your neighbour is at home, but you are not able to assist in moving them out, notify the rescue authorities about the situation as fast as possible.

Work in cooperation with the other residents.

Things to consider when helping people with reduced mobility

- Help a person with reduced mobility to exit, within the limits of your own capabilities.
- Listen to the person you're helping.
- Take care of the person you helped also after getting out.

8.8 Water damage

Action guide

- Disconnect power from where the leak is and from its proximity.
- Stop the water from flowing, from i.e. the water mains, if possible.
- Notify of the situation immediately:
 - to the maintenance personnel: Tapiolan Lämpö Oy, phone 0207505360, service 0207505360
- Contact the emergency number if needed **112**.
- Main water shutoff: In the parking garage, technical areas, in the heat distribution room
- Heat distribution room: In the garage
- Electricity switchboard: In the parking garage, technical areas, access from the heat distribution room

Should there be threat of water outside the building

- Find out what is causing the water threat.
- If there is a leak, try to block it.
- Try to prevent the water from getting into the building.
 - by baggings
 - by using plastic covers
 - by directing the water away from the building
- Call for additional help if needed.

8.9 Under threat of violence

In an unarmed threatening situation, act in the following way.

- Act calmly and try to calm the person with your behaviour.
- Make sure you do not turn your back or let yourself be cornered, so that you will always have

an escape route when a threatening person comes close.

- Call for help depending on the circumstances.
- Escape and help others escape.

Take care of your own safety. Seek to direct the threatening person to a place where they cannot harm others. After the event, contact the police about the incident if required.

If the threatening person is armed, act in the following way.

- Do not resist.
- Do whatever the person threatening you tells you to do.
- As the situation permits, try to warn others.
- By closing doors, you can limit a person's movement within the property.
- After the situation, call **112** to get professional help on site as fast as possible. Listen to directions and act accordingly.

Every threat and sighting of a possibly threatening situation must be taken seriously and the police must be informed immediately. Through your own behaviour, you can affect the progress of the situation, and thus you should take all threatening situations seriously and try to calm down already begun situations.

8.10 Public warning signal

The public warning signal is a one-minute-long ascending and descending tone or a warning announcement by the authorities. The length of the ascending tone is 7 seconds.

The public warning signal means an immediate danger threatening the public. The warning is given in population centres with an outdoor alarm system and with an alarm attached to a vehicle in rural areas.

The All Clear signal is a one-minute-long monotonous signal. It is an announcement of the threat or danger having passed.

Act in the following way after you've heard the public warning signal

- Proceed indoors.
- Stay indoors.
- Close doors, windows, ventilation holes, and air conditioning devices.
- Turn on the radio and wait for instructions.
- Avoid using the phone to prevent telephone lines from getting jammed.
- Do not leave the areas unless urged to do so by the authorities, so as not to endanger yourself on the way.

8.11 Gas hazard

Public warning signal in danger situations concerning gas

Additional information on the type of danger can be got from radio and television. The following are usually connected with a gas hazard.

- If you are indoors and can smell gas:
 - stay indoors
 - the top floors make the best shelter
 - place a wet cloth over your mouth and breathe through it
 - stay on the upper floors until the danger is over
 - do not go into the basement.
- If you are outside when you smell gas but are not able to get indoors:
 - hurry into side wind from underneath the gas cloud
 - try to get as high as possible, for example to the top of a hill
 - press a wet cloth, tuft of grass, turf, or moss in front of your mouth and breathe through it.

Additional information on taking cover from gas

- Switch off air conditioning devices and close doors and windows tightly. The more airtight you can make the building, the slower the gas can get inside.
- You can also close or tape inside doors and stay in upwind areas. If you smell gas you can breathe through a moist and spongy cloth.
- The authorities will announce on radio or with vehicles with loudspeakers when the gas cloud has dispersed. Ventilate indoors well after the event.

8.12 Radiation hazard

Radiation situations are monitored with gauges throughout the country. Even the slightest change is detected immediately and notified of. A public warning signal is given upon the threat of radiation.

Go inside

Close doors, windows, ventilation holes, and air conditioning tightly to prevent radioactive substances from getting indoors. The centre and basement of the building are the best places to take shelter.

Iodine tablets

Take an iodine tablet only when the authorities tell you to do so either on the radio or on television. Iodine tablets prevent radioactive iodine from building up in the thyroid gland, but offers no other protection. You should not go outside the facilities to look for iodine tablets when the danger situation is present. You can acquire iodine beforehand from the pharmacy. Each property should have 2 iodine tablets per person.

Protect your food and drinking water

Put the food products that are out into plastic bags or tight containers. The refrigerator, freezer, and tight packages protect against radioactive dust.

Moving outside

If you must go outside, use tight clothing that covers the skin, for example rain gear. Upon coming back inside, take off your clothes in the entry hall and wash up well. Use a respiratory mask, towel, or paper towel to prevent radioactive particles from getting to your lungs.

Additional instructions

You will get additional information from your city's rescue authorities, from broadcast media, and from Yle's (the Finnish Broadcasting Company's) Teletext page 867. You can also find information from the Finnish Radiation and Nuclear Safety Authority's website www.stuk.fi and from the rescue authorities website www.pelastustoimi.fi.

8.13 Blackouts

How to act during a power cut:

- First check the fuses. If they are intact, find out whether the electricity of your neighbour or neighbouring houses is working.
- If the electricity is out from a larger area, the problem is already known and actions to fix it have started. Most electricity suppliers have a taped recording of the malfunction on its fault service number, which will give information on the blackout situation in your area.
- When the electricity comes back but acts unusually, for example the lights burn brighter or dimmer than usual, the reason might be a break in the electricity network's neutral wire. This can result in equipment damage, fire and, in the worst case, the risk of electric shock. In such situations, switch off the electricity from the main switch and call your electricity supplier's fault emergency number.
- When a power cut lasts longer, prepare yourself with warm clothes, especially in the winter, and home storage supplies. Instructions regarding home storage supplies can be found in the appendices.

In the event of a power cut, lifts will stop working. Should you be stuck on a lift due to a power cut or other failure, act as follows:

Contact the lift maintenance emergency line:

- by mobile phone - (KONE Hissit Oy (2), 0800 15063)

When necessary, you can call the general emergency number 112.

9 Civil defence

This property does not have its own civil defence shelter. The property is part of the general civil defence district. Rescue operations are dependent on regional population protection. Rescue operations are also prepared to operate in exceptional conditions. The core tasks are detecting threats and warning about them, maintaining ability to protect the population and taking care of rescue operations and the required additional resources. The objective is the most efficient operation possible in accident situations under exceptional circumstances.

The area rescue authorities work together with the municipalities in the area on civil defence and protection matters. The rescue authorities also ensure their own organisation's preparedness for civil defence in exceptional situations. In civil defence, the necessary rescue, first aid, ambulance, and maintenance set-ups are created only in exceptional circumstances. In these tasks, there are approximately 85,000 people nationwide.

There are 110,000 spaces altogether in the civil defence shelters of Finland. The authorities will give directions via radio if you are supposed to move to a civil defence shelter, along with the information to which shelters people are supposed to go. Moving into the civil defence shelters therefore always happens as a result of direction by the authorities. Accidents occurring in normal times do not generally ever require taking cover in civil defence shelters, with taking cover indoors being sufficient.

10 Säilyttäminen

Erilaisten tavaroiden säilyttämisestä voi aiheutua tulipalon syttymisen tai leviämisen vaara, turvallisen poistumisen estyminen hätätilanteessa sekä tulipalon sammuttamisen vaikeutuminen. Käsittele siksi palovaarallisia aineita aina ohjeiden mukaan. **Palovaarallisten aineiden säilyttäminen huoneistokohtaisissa varastoissa on kokonaan kielletty. Rakennuksen uloskäynnit on aina pidettävä kulkukelpoisina ja esteettöminä.**

- Asuinhuoneistot ja niihin kuuluvat parvekkeet, terassit tai vastaavat tilat
 - Asunnoissa tulee välttää tarpeettomien tavaroiden varastointia.
- Uloskäytävät, porrashuoneet, sisäiset käytävät ja varastojen kulkureitit
 - Ei saa säilyttää mitään tavaraa.
- Rakennusten alla tai läheisyydessä
 - Ei saa säilyttää helposti syttyvää materiaalia tai muuta tavaraa rakennusten seinustoilla, mm. roska-astiat, pahvipinot ja kuljetuslavat

Huom

Epäselvissä tapauksissa tulee aina ottaa yhteyttä paikallisen pelastuslaitoksen palotarkastajaan

11 Attachments

This rescue plan has the following attachments:

- Business space owner's responsibilities
- How to use a small fire extinguisher
- Car shelter
- Home storage supplies

In addition, the following attachments are at the end of the document:

- Rescue route

Appendix A Business space owner's responsibilities

The owner or business practitioner of the space must to the extent of his/her abilities supervise that rules and regulations for fire and accident prevention, and individuals' safety in the work place, are followed. It is recommended to appoint a person in charge of safety and security, who will take care of safety and security matters and work in cooperation with the property's appointed people in charge.

The owner and business practitioner of the space must both ensure that the building, structures and their environs are maintained in such a condition that

- the risk of fire, intentional lighting of a fire, and the threat of spreading is minimal
- people in the building can, in the case of fire, or some other kind of sudden danger situation, exit the building or they can be rescued in other ways
- rescue action is possible in the event of fire or another kind of accident.

Easily flammable material or other items are not permitted to be stored in the attic, the basement, hallways or exit ways, under the building, or in its immediate proximity.

The following equipment and devices must be kept in working order and serviced and inspected appropriately:

- extinguishing equipment
- fire detection, alarm, and other detecting and alarming devices signalling danger
- guides and lighting for exit ways.

The owner and user of the space are for their part responsible for the condition of the equipment and will notify of defects to the persons in charge.

The owner and business practitioner of the space must, for their part

- prevent fires from starting and other danger situations from arising
- prepare for the protection of people, property, and environment in danger situations
- preparing for extinguishing fires as well as for other rescue operations, within their individual capabilities
- start action for securing safe exit from fires and other danger situations, as well as action for making rescue operations easier.

Appendix B How to use a small fire extinguisher

The resident is responsible for acquiring extinguishing equipment for the apartment.

B.1 Extinguishers

- Turn the extinguisher upside down and shake the extinguisher to ensure the powder's running.
- Remove the safety pin.
- Approach the fire from the direction of the wind.
- If you are indoors, approach low on the floor, as this will improve the visibility.
- Take a hold of the extinguisher's hose from the end and direct the extinguishing substance at the base of the flames, don't cut through them.
- Start extinguishing from the front and continue towards the back, or from bottom to top.
- Extinguishing can be improved with a back and forth motion.
- The whole area that is burning must be covered in the extinguisher cloud.
- After the flames are extinguished the extinguishing can be stopped.
- Observe the burnt object and make sure that the fire is out.
- If the target catches fire again, repeat the extinguishing.

B.2 Extinguishing blankets

- Take a hold of the corners of the blanket and protect your hands by placing them inside the blanket.
- Step on the blanket with your foot; this will prevent the flames from getting to your face.
- If you are outside, approach the fire from the direction of the wind.
- Extend your arms straight.
- Spread the blanket over the fire.
- Hold the blanket tightly over the fire and make sure that the fire is extinguished.
- Protect yourself while lifting the blanket as the fire can re-ignite.
- Make sure once more that the fire is extinguished.

Appendix C Car shelter

The vehicle shelter is intended only for the storage of motor vehicles. The intended use is mentioned in the up-to-date construction permit.

The fire safety requirements of the construction of a vehicle shelter are specified in class E of Finland's national building code. The requirements have some differences in relation to other usage purposes in terms of, for example, the fire resistance and evacuation safety of structures.

The car shelter may not be used in contravention of the building permit except with the permission of the building monitor. The purpose of use is a parking area for motor vehicles, i.e. not a car wash, loading area, refuse room, storeroom, shop, flea market, car repair garage, tire store etc.

Keeping other loose equipment in vehicle shelters is more limited due to greater risks to personal property and people. In addition to motor vehicles, the following objects may be stored:

- mopeds, motorcycles, snowmobiles and other motor vehicles in the Finnish Transport Safety Agency's vehicle registry
- bicycles
- a small trailer if empty
- vehicles intended for the care of the property.

In addition to the list above it is not permitted to store other property, such as:

- additional appliances attachable to the vehicles intended for the care of the property
- working machines, such as excavators, vibrators, driven cranes, etc.

Parking garage

Location	In the basement, driving entrance
----------	-----------------------------------

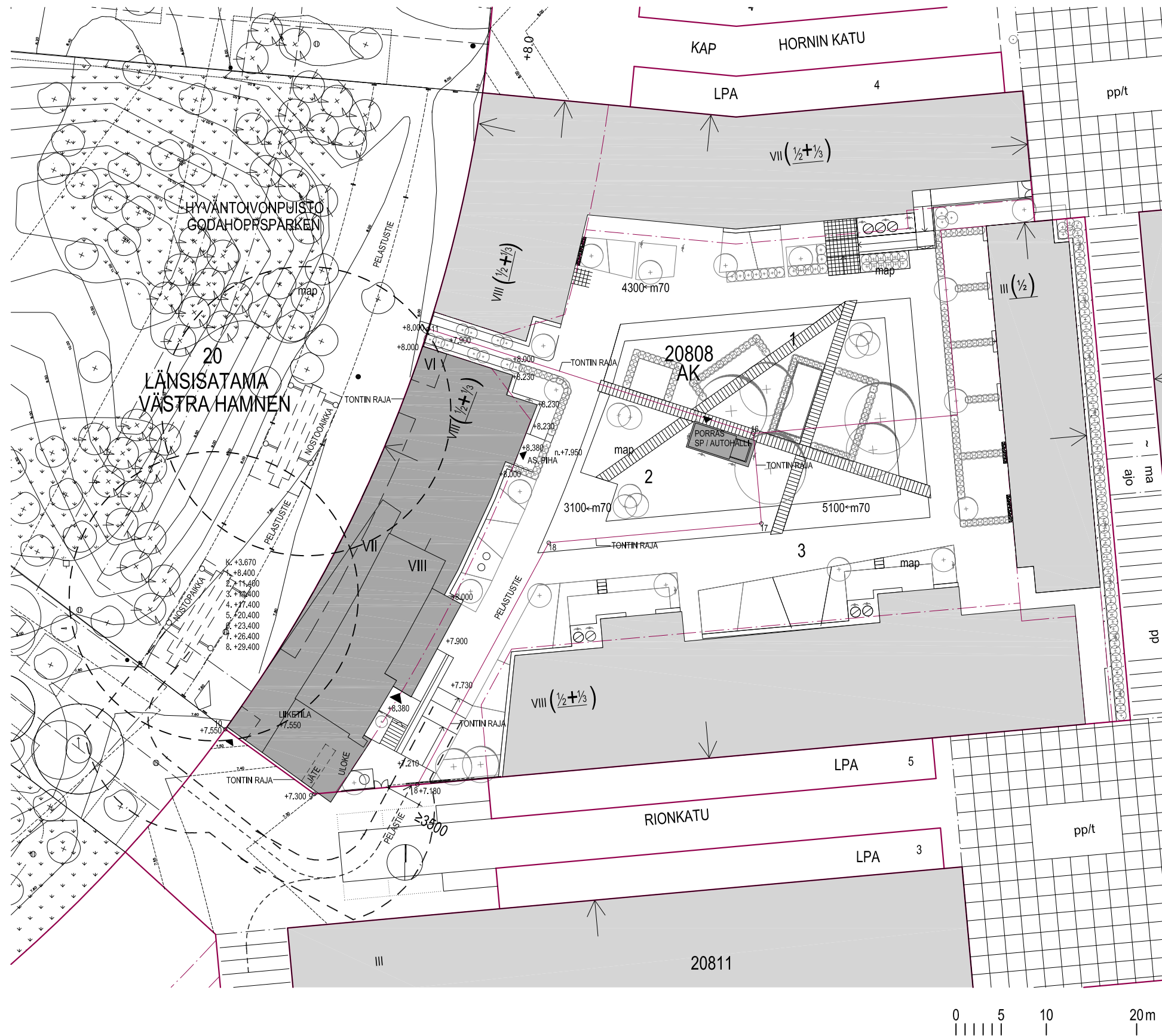
Appendix D Home storage supplies

Home storage supplies are a part of a housing company's residents' independent protection. Surprising circumstances are easier to overcome when you have a home storage supply at home. Home storage supply means those food and other daily goods that are stocked up on more than normally needed in weekly/monthly use. The home storage supply should last for several days, even a week. The home storage supply consists of everyday groceries and items, which are stocked up on as they are used up. This way the groceries and other items stay fresh and usable.

A situation where you cannot get to the store can surprise you for many reasons. A person living alone can get sick and is not able to go shopping or a member of the family can fall sick. The wider society is vulnerable as well; there can be a strike, traffic connections may break down, or there might be a wider disturbance in the electricity grid. There can be an accident which closes the stores or prevents you from going outside. Additionally, distribution disturbances can prevent goods from getting to the stores as well as getting items from the store.

Each family has their own kind of home reserves consisting of usual groceries. The contents of the home reserves can differ based on the household's food preferences and also include containers for storing water, medicine, iodine tablets, as well as household-specific necessities. The home reserves should last at least a week, preferably two – home reserves are continuously used and restocked continuously.

The home reserves also include essential supplies, of which there must be a supply for the same period as in the case of food. These are, amongst others, personal medication, hygiene products, nappies, a battery-powered radio, an electric flashlight and batteries.



AS. OY HELSINGIN RIONTÄHTI, RIONKATU 11, 20808 TONTTI 2

PELASTUSREITIT

ASUNNOISTA JA KERHOTILASTA POISTUTAAN PIHALLE LUHTIKÄYTÄVÄN JA PORRASHUONEEN KAUTTA.

ASUNNTOJEN JA KERHOTILAN VARATIENTÄ TOIMII PARVEKKEET/TERASSIT HYVÄNTOIVONPUISTON PUOLELLA. PELASTUSAJONEUVON ULOTTUVUUDET OHEISESTA KAAVIOSTA.

LIIKETILASTA POISTUTAAN RIONKADULLE 1.KERROKSESTA.

KOKO KORTTELIN 20808 PELASTUSREITTI PIHALLE ON RIONKADULTA TONTTIEN 2 JA 3 VÄLISTÄ.

NOSTOPAIKKA 6x13m
ULOTTUVUUS YLÖS 15-27m, SIVULLE 16-18m
AUTON KÄÄNTÖSÄDE SISÄ: 5,5m, ULKO: 12,5m
AJOREITIN LEVEYS 3,5m

